







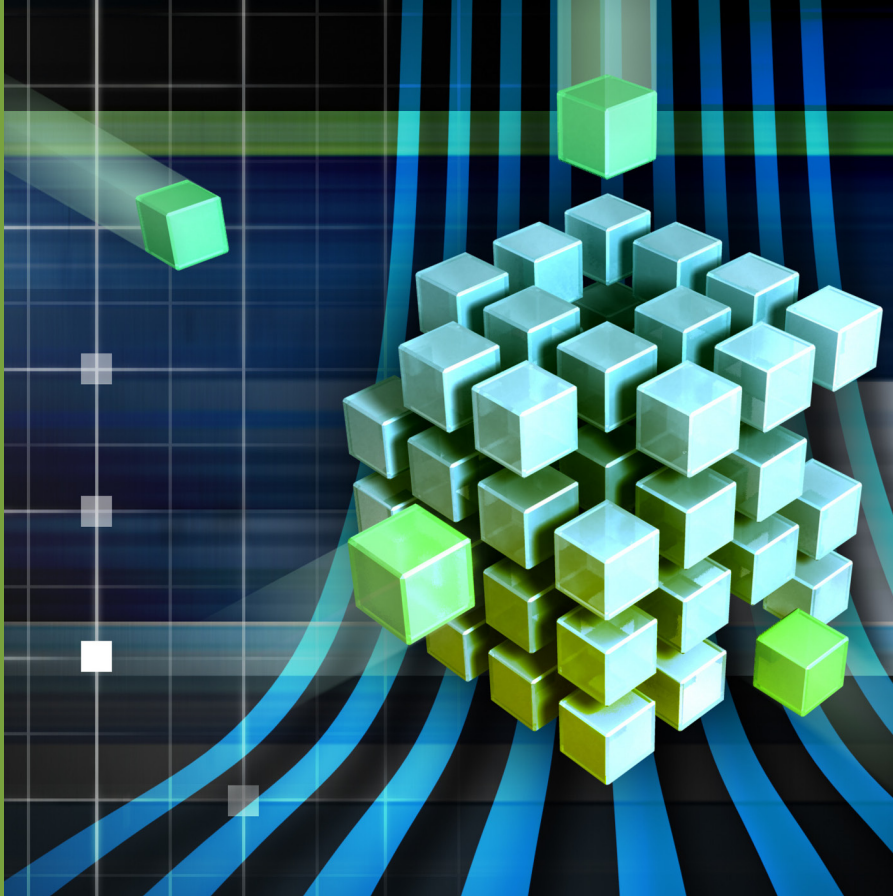


reprocontrol

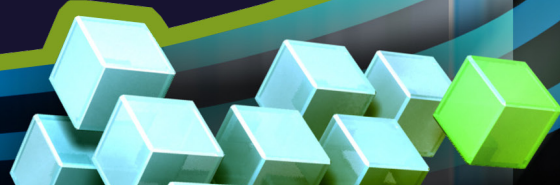
YOUR TOTAL REPROGRAPHIC WORKFLOW MANAGEMENT SYSTEM

-  queues and clusters for total efficiency
-  simple user interface design
-  reliable cost tracking
-  integrate any printer, scanner and folder
-  platform-independent, seamless connectivity
-  perfect color management
-  total print efficiency and image quality
-  flexible modular setup adapts anytime



PRODUCT SPECIFICATIONS

OVERVIEW OF FEATURES
AND ADDITIONAL OPTIONS



General Printing Features

Simultaneous Printing	included, given that more than 1 printer is connected
Multi Page File	■
Load Balancing	■
Autorotation (Paper Save)	■
Collate	■
Media Saving With Nesting Across Job Boundaries	■
Filter/Automatic Modes	■
Paneling / Tiling	■
AOI selection	■
Preview	■
Printer Driver for Windows Applications	■
Filter Editor	■
Multiple Copies	9999
Multiple ICC Profile Support Within One Nest	■
Printer Query With Media and Ink Recognition	■
Scale, Crop	1 - 9999%
Standard Custom/Paper Sizes	■
Rotate by 90° Steps	■
Mirror	■
Borderless Printing/ Crop Printer Margins	■
Alignment (left/right/center)	■
Remove white borders	■
Job Scaling to Pre-Defined Page Sizes	■
Add Print Margins	■
Maximum Printing Width	unlimited (depends on printer)
Backchanneling	■
Bi-directional printer communication / printer status monitor	■
User Label / Stamps	■
Printer Drivers	1 of group 1 included
Printer Drivers Group 1*	□
Printer Drivers Group 2*	□
File Format Detection	■
Full HPGL Support, Full DWF Support	■
PostScript / PDF Support	□
Raster Files	■

* Printer driver group 1 includes inkjets, print to file, connection to windows printer driver, wide format entry level LEDs.
Printer driver group 2 includes wide format and high level printers, wide format mid and high level LEDs.

Color Functions

Color Management Across Printers	■
Color Space Detection	■
Media & Calibration Wizard	■
Integrated Spectrophotometer Support	■
Media Profiles	■
Gamut Warning	■
ICC Monitor Calibration	■
Soft Proof	■
Spot Color	■

Submit Prints

Automatically Assign Jobs to the Best Suitable Printers	included, given that more than 1 printer is connected
Split Jobs Among Various Printers for Faster Overall Output	included, given that more than 1 printer is connected
Nesting	■
Internet Access	□
Browser Clients	■
Input Hotfolders	□
Cluster Management	■
Queue Management	■
Queue Acts as LPD/LPR	■
Queue Acts as Printer Port	■
Job Monitor, Job History	■
Reload Job	■
Job Submission With Extended Edit Features	■
Edit in Job Editor	■
Application Clients	■

User Administration

Accounting	■
Costtracker	■
User Administration	■
User management with specific rights	■
Concurrent users	1, additional optional

□ Optional ■ Included



General Scanning Features

(given that a scanning license has been purchased and a scanner is connected)

Wide Format Scanner Support	■
Scan to File	included in scanning license
Multi Page File	included in scanning license
Automatic Size Detection	included in scanning license
Autostart	included in scanning license
Filter Editor	included in scanning license
Embedding ICC Profiles	included in scanning license
Interpolation, Sharpening, Anti-Aliasing, Descreening	included in scanning license
Sharp/Smooth	included in scanning license
Auto Name Increment	included in scanning license
AOI Selection	included in scanning license
Preview	included in scanning license
Scaling	included in scanning license
Closed Loop Calibration	included in scanning license
Filter/Automatic Modes	included in scanning license
Deskew On-The-Fly	included in scanning license
Rotate by 90° Steps	included in scanning license
Standard Custom/Paper Sizes	included in scanning license

Other Functions

Online Folder Support	■
Client / Server Architecture	■
Admin notification (Email/sound)	■
Transmittal sheet	■
Presets	■
Best In Market IT-Security (1 Port Only, SSL Encryption)	■
UI Languages	22
Editor	■
File Analyzer	■
Technical Label	■
Preflight Job Analysis	■

All product features and specifications are accurate as of October 2011 and are subject to change without notice.
All other product names mentioned herein are trademarks of their respective companies.



© SCP Software GmbH
Dresdener Str. 3
52068 Aachen
Germany

ph +49 241 96830 0
fax +49 241 96830 - 10
www.scpssoftware.com
info@scpssoftware.com

